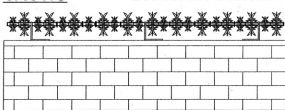


## CACTI® - BRACKET DETAILS

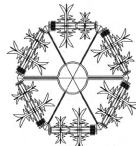


Cacti® spikes are manufactured from a Nylon product which is combined with certain additives, also embedded within the cacti® is a metal spike. The cacti® has been designed with acute edges and maximum impaling projections of 50mm. These spikes are mounted on a nylon tube, alternating large, small, large, small with cacti® washers as packers which makes these elements virtually maintenance free.

Available colours: Black, Grey, Green, Brown, Red and Blue.

Bracket s are normally manufactured from 50mm x 10mm flat (BS 4360 GRD. 43A) and supplied galvanised but can be supplied prime painted and to a gloss finish.

## CACTI® - Security Collars

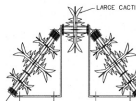


Manufacture to suit the shape of a pipe or section. Supplied typically in two pieces for clamping around the pipe or section. Can also be supplied in double rows of each®.

Available Cacti® colours :

Black, Grey, Green, Brown, Red and Blue.

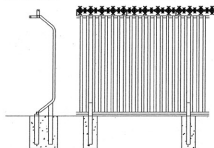
## CACTI® - STANDARD DOWNPIPE PROTECTION UNIT(DPU)



The standard unit accommodates a 115 mm (4.5") diameter pipe with an overall distance from the wall to the outside edge of pipe 203 mm (8").

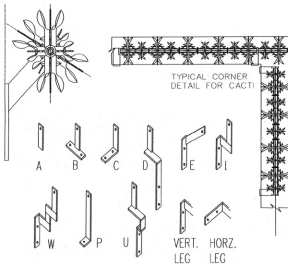
Special and corner units made to suit customer requirements.

## FENCING - Trojan Fence

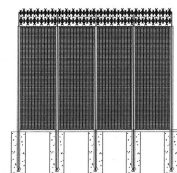


### Specification

- 50 x 50 x 3 SHS Horizontals
- 48 dia tubular Verticals
- Complete with anti-saw wire
- 80 x 80 x 3 SHS Posts
- 50 x 10 flat Brackets
- 12 dia axle bar
- Double Row Cacti®

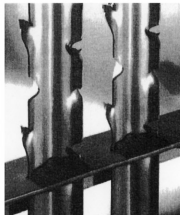


## FENCING - Radar Compatible Fencing



### Specification

- Panels 2500 high x 1200 long
- Elongated I I posts
- Double tier Cacti®



### Just some of the Sabre-Tooth's characteristics are:

- The incorporation of a greater anti-climb element that has the 'leading edge' - less vulnerable to attack and access.
- Attractive design with good appearance from external and internal aspects
- Through rail design with unique non-weld fixing \*
- One of the highest security boundary fences on the market.
- Interlocking pale through cross members for a higher level of security. Suitable for both galvanised and powder coated finishes.
- On-site weld application for even greater security (galvanised finish only).
- Also suitable for front face fixing using middle-belt, screws or rivets
- Galvanised as standard, with powder coating available for more environmentally sensitive areas
- Height range from 1.8m to 3.6m, thickness of pale from 3mm to 3.5mm
- Gates include a unique sliding bolt security feature to prevent any footholds.
- Optical security features can include :
  - A third rail to bottom of pale to deter climbing
  - Extended pale lengths to provide anti-tampering